

# Major Thoroughfare Access to SH 99

The Woodlands Township  
Ad Hoc Transportation Committee  
Feb. 13, 2014

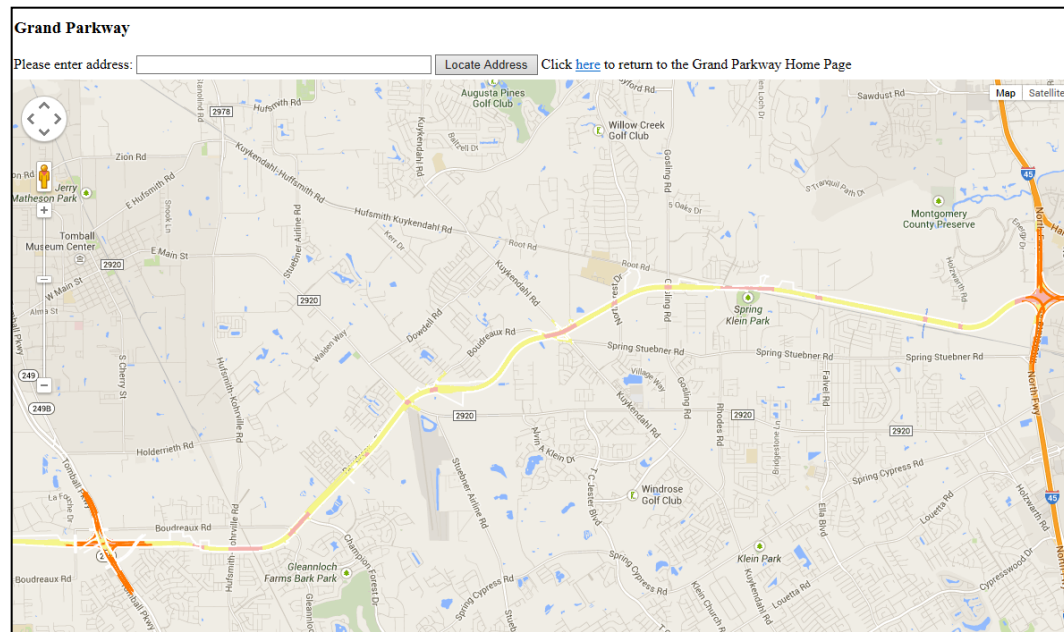
# Overview

- Grand Parkway Segment F-2 Corridor
- Proposed Diamond Interchanges
  - Gosling Road
  - Kuykendahl Road

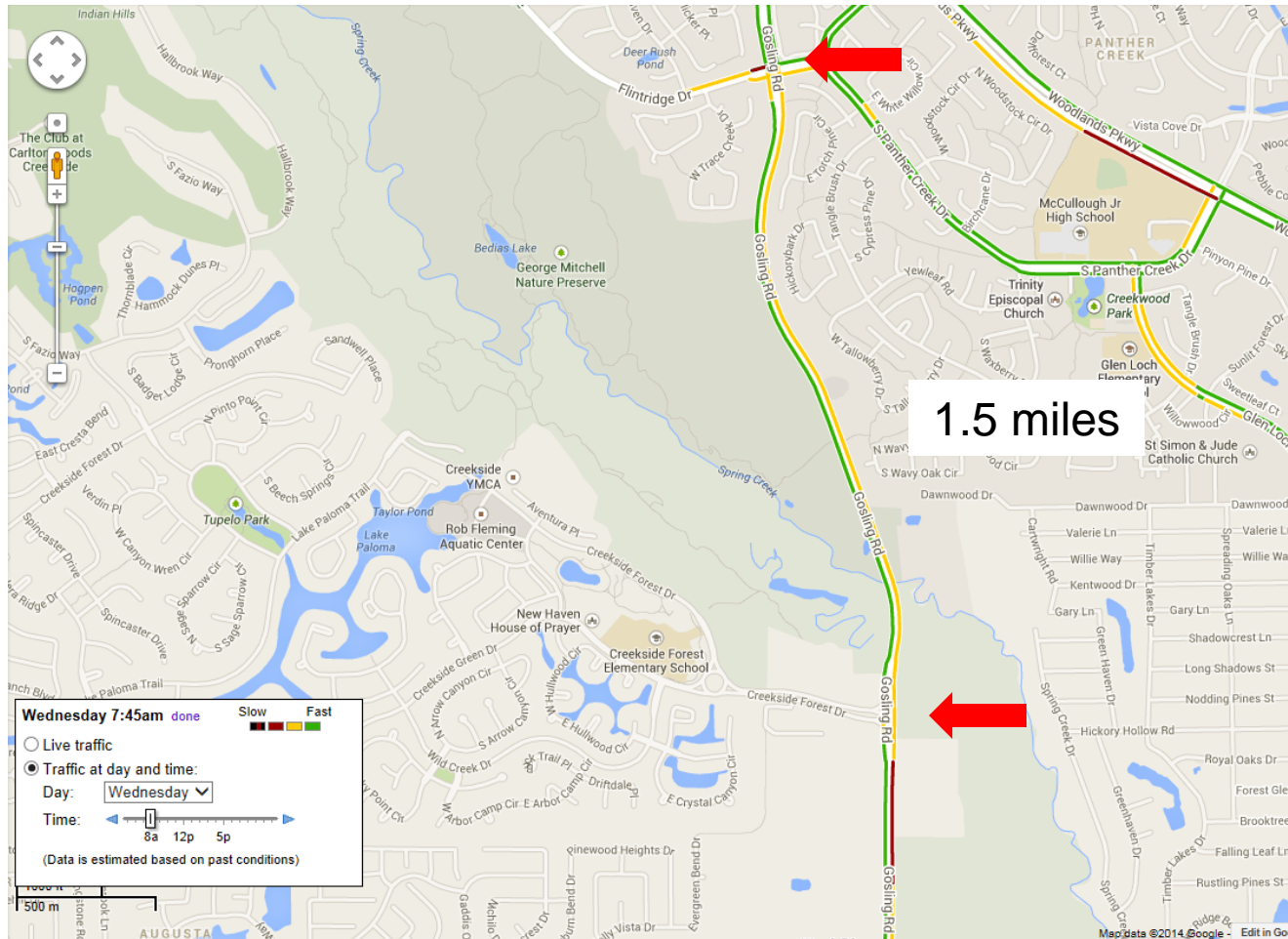
# SH 99 Corridor

## Segment F-2

- Go to Grand Parkway Association link...

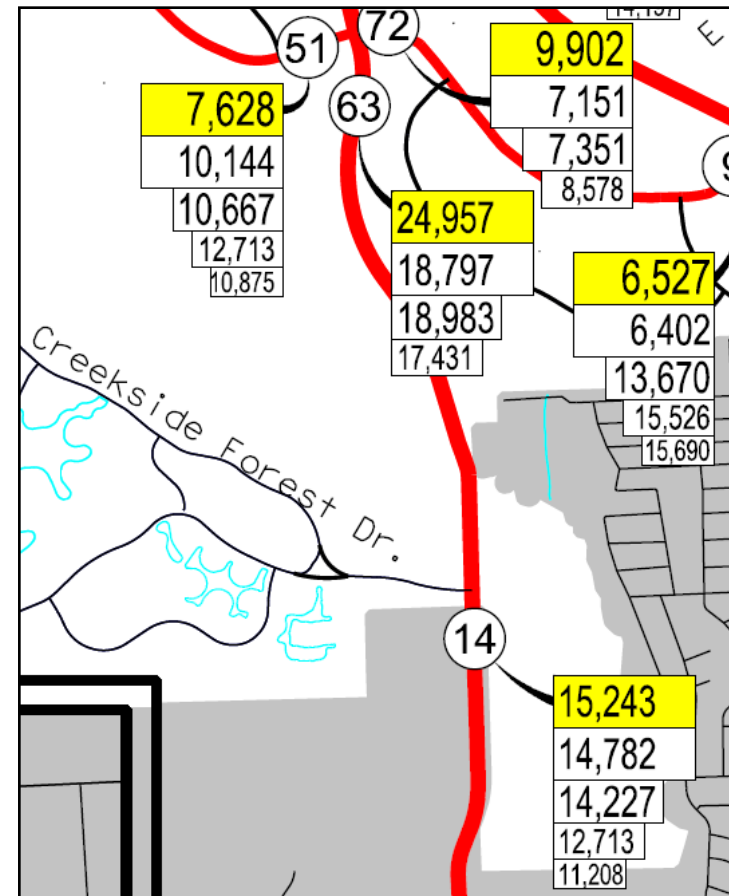


# Gosling Road

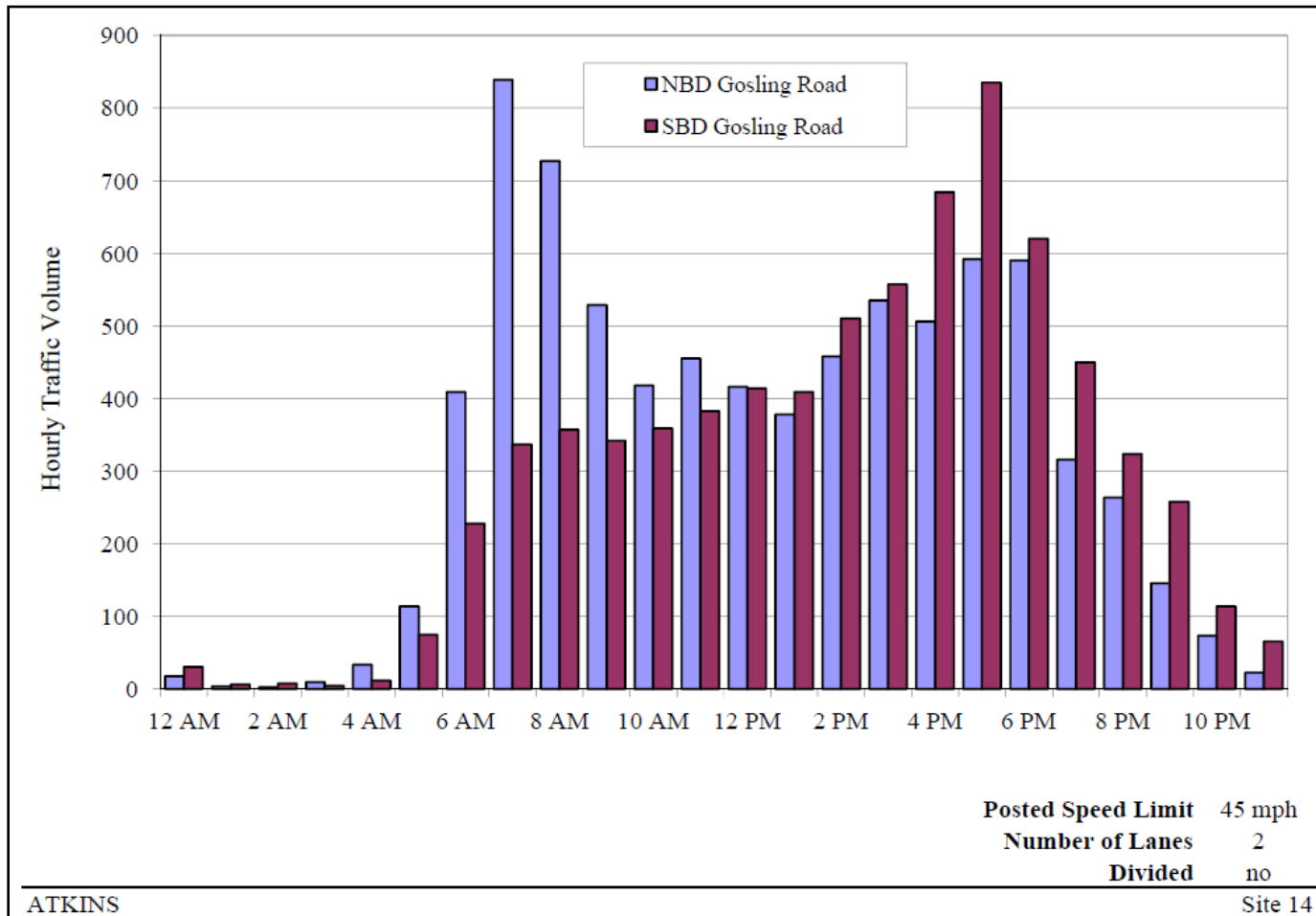


# Gosling Road

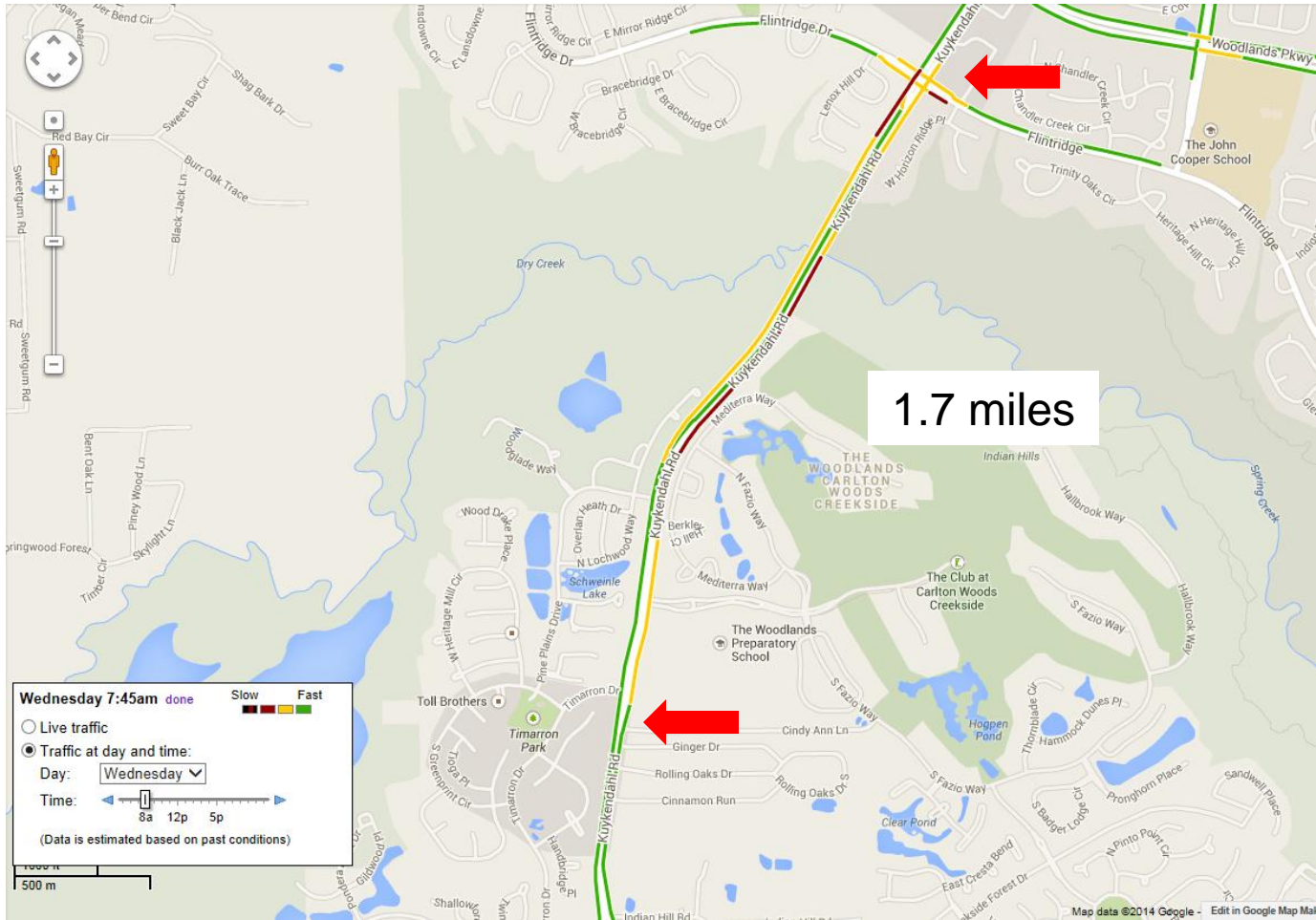
- Two Lanes
- Sufficient ROW
- April 2013 Traffic
- Peak Hour
  - Level of Service F
  - 32% increase
    - 2012 to 2013



# Gosling Road

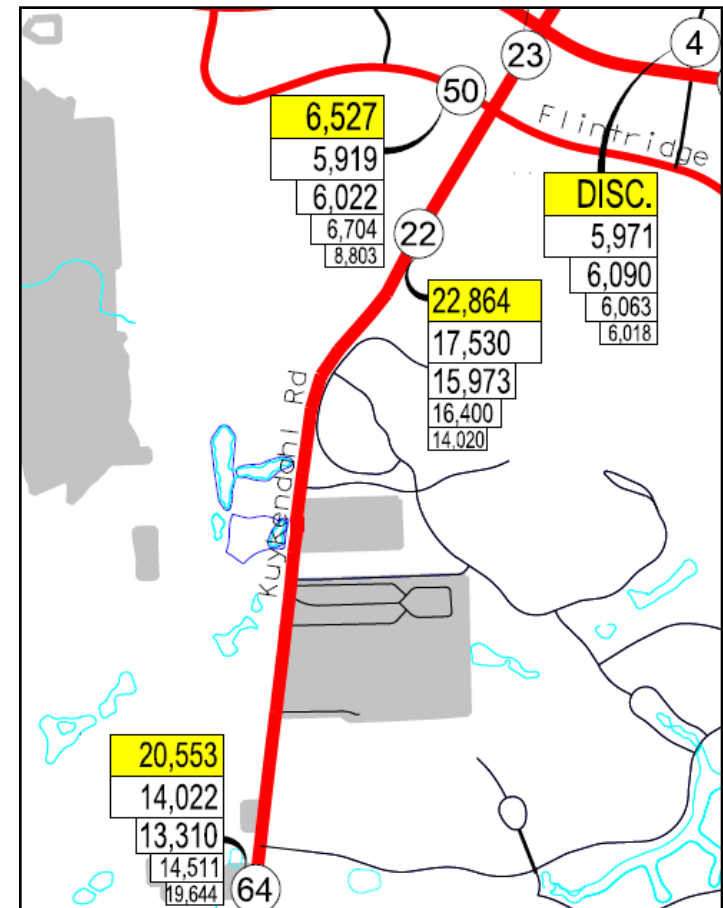


# Kuykendahl Road



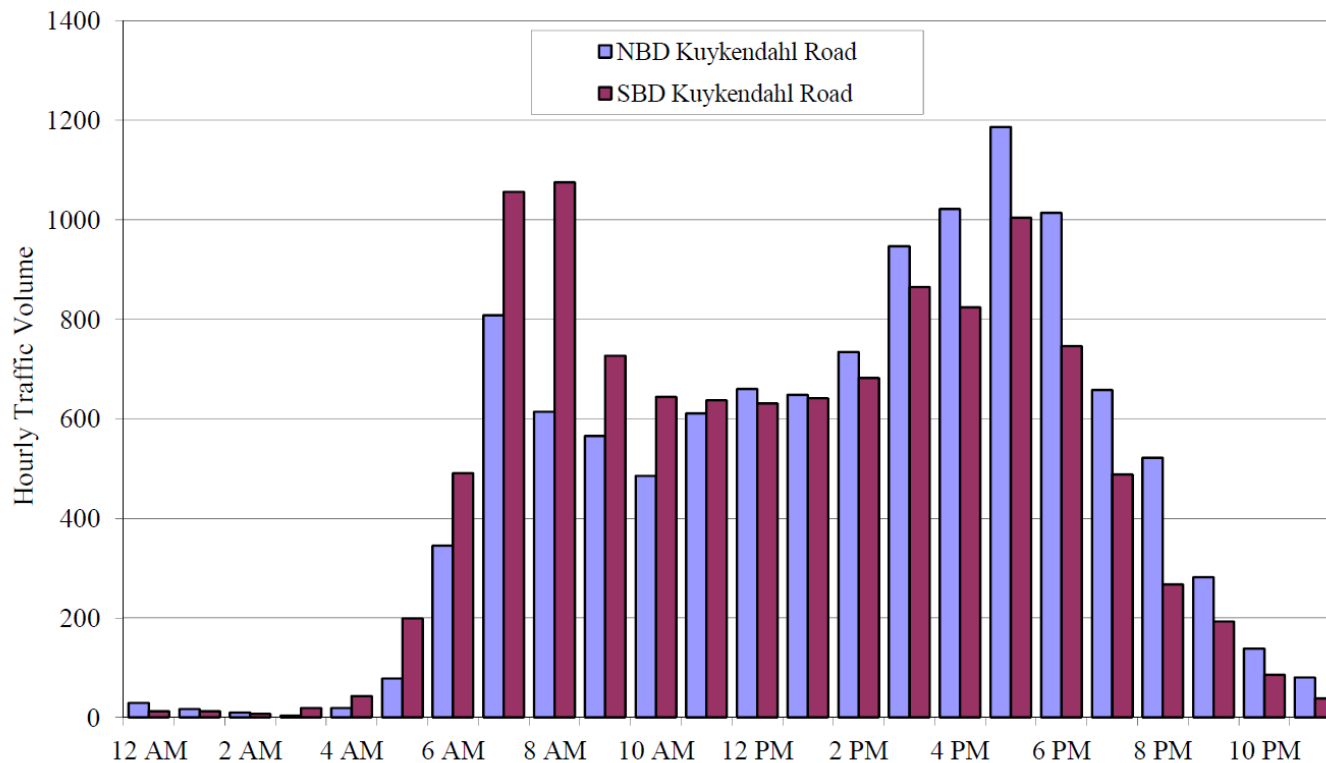
# Kuykendahl Road

- Two Lane Bridge
- 2 lane2 & 4 lanes
- April 2013 Traffic
- Peak Hour
  - Level of Service F
  - 30% increase
    - 2012 to 2013





# Kuykendahl Road



**Posted Speed Limit** 45 mph  
**Number of Lanes** 2  
**Divided** no

# Questions...



**Robert A. Maxwell, P.E.**

Vice President

Transportation Division

[Rmaxwell@jonescarter.com](mailto:Rmaxwell@jonescarter.com)

8701 New Trails Drive, Suite 200  
The Woodlands, Texas 77381-4241

Tel 281 363 4039

Fax 281 363 3459

Cell 281 740 0158

