



# LAW ENFORCEMENT SERVICES

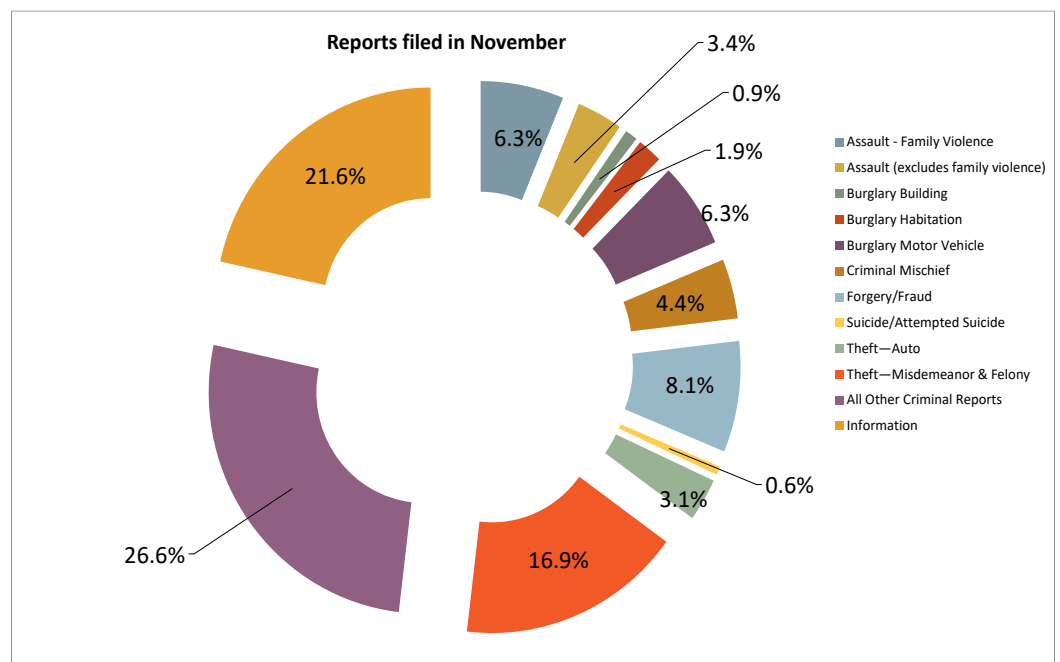
## CRIME CATEGORIES OF NOTE

**INSIDE THIS ISSUE:**

<i>Crime Categories of Note</i> <i>By Village-2021-2020</i>	2
<i>Crime Comparison Chart—2021-2020</i>	3
<i>Summary of Monthly Activity 2021</i>	4
<i>Six Month Crime Trend</i>	6
<i>Additional Notes &amp; Calls for Service</i>	7
<i>Reference Guide</i>	8

Crime Category of Note	AUG 2021	SEP 2021	OCT 2021	NOV 2021	YTD 2021
<b>Assault - Family Violence</b>	34	28	32	20	<b>281</b>
<b>Assault (excludes family violence)</b>	8	11	11	11	<b>171</b>
<b>Burglary Building</b>	4	1	2	3	<b>34</b>
<b>Burglary Habitation</b>	6	7	3	6	<b>52</b>
<b>Burglary Motor Vehicle</b>	15	51	30	20	<b>261</b>
<b>Criminal Mischief</b>	15	14	21	14	<b>156</b>
<b>Forgery/Fraud</b>	35	27	31	26	<b>475</b>
<b>Homicide</b>	0	0	0	0	<b>1</b>
<b>Robbery</b>	1	4	4	1	<b>18</b>
<b>Suicide/Attempted Suicide</b>	10	6	5	2	<b>58</b>
<b>Theft - Auto</b>	8	10	11	10	<b>70</b>
<b>Theft-Misdemeanor &amp; Felony</b>	43	54	59	54	<b>564</b>
<b>All Other Criminal Reports</b>	71	82	101	85	<b>695</b>
<b>Information</b>	94	84	94	69	<b>772</b>
<b>TOTAL</b>	<b>344</b>	<b>379</b>	<b>404</b>	<b>321</b>	<b>3,287</b>

Crime Categories of Note combine crime data from both Harris and Montgomery Counties



# CRIME CATEGORIES OF NOTE — BY VILLAGE/ZONE NOVEMBER 2021 AND 2020



## CRIME CATEGORIES OF NOTE — 2021



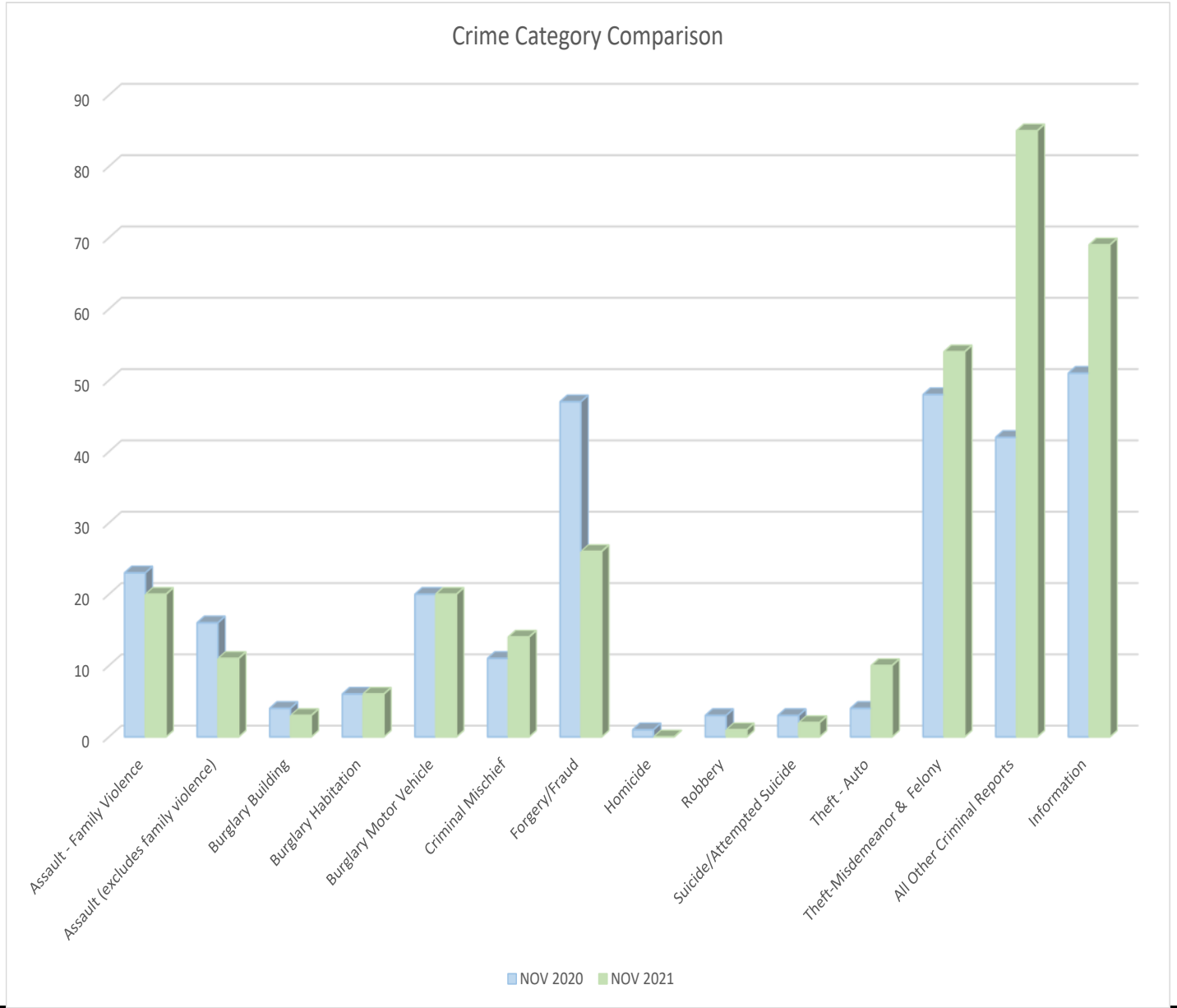
Crime Category of Note	Grogan's Mill	Panther Creek	Indian Springs	Sterling Ridge	Alden Bridge	Cochran's Crossing	College Park	Town Center	Creekside Park	Total
Assault - Family Violence	4	1	0	3	3	4	2	2	1	20
Assault (excludes family violence)	2	0	0	0	0	0	4	5	0	11
Burglary Building	1	2	0	0	0	0	0	0	0	3
Burglary Habitation	3	0	0	2	0	0	0	1	0	6
Burglary Motor Vehicle	6	1	0	0	4	0	4	5	0	20
Criminal Mischief	2	1	1	2	2	0	1	4	1	14
Forgery/Fraud	2	2	2	3	4	1	3	4	5	26
Homicide	0	0	0	0	0	0	0	0	0	0
Robbery	0	0	0	0	0	0	1	0	0	1
Suicide/Attempted Suicide	0	0	0	0	2	0	0	0	0	2
Theft - Auto	1	0	0	0	2	0	1	5	1	10
Theft-Misdemeanor & Felony	6	6	0	1	0	2	8	26	5	54
All Other Criminal Reports	5	10	2	9	6	0	14	31	8	85
Information	7	13	4	3	8	5	6	18	5	69
<b>Total</b>	<b>39</b>	<b>36</b>	<b>9</b>	<b>23</b>	<b>31</b>	<b>12</b>	<b>44</b>	<b>101</b>	<b>26</b>	<b>321</b>

## CRIME CATEGORIES OF NOTE — 2020

Crime Category of Note	Grogan's Mill	Panther Creek	Indian Springs	Sterling Ridge	Alden Bridge	Cochran's Crossing	College Park	Town Center	Creekside Park	Total
Assault - Family Violence	6	3	0	3	4	2	2	1	2	23
Assault (excludes family violence)	3	2	0	3	0	1	1	5	1	16
Burglary Building	0	1	0	1	0	0	0	2	0	4
Burglary Habitation	1	0	0	2	1	0	1	1	0	6
Burglary Motor Vehicle	5	1	1	0	1	1	2	5	4	20
Criminal Mischief	0	3	1	1	1	0	1	3	1	11
Forgery/Fraud	5	3	3	4	10	7	2	8	5	47
Homicide	1	0	0	0	0	0	0	0	0	1
Robbery	0	0	0	2	0	0	1	0	0	3
Suicide/Attempted Suicide	0	0	0	0	3	0	0	0	0	3
Theft - Auto	0	0	0	0	1	0	1	1	1	4
Theft-Misdemeanor & Felony	5	12	2	5	2	0	5	12	5	48
All Other Criminal Reports	4	3	5	7	4	0	5	14	0	42
Information	8	10	1	4	6	3	3	10	6	51
<b>Total</b>	<b>38</b>	<b>38</b>	<b>13</b>	<b>32</b>	<b>33</b>	<b>14</b>	<b>24</b>	<b>62</b>	<b>25</b>	<b>279</b>

# CRIME COMPARISON CHART

## NOVEMBER 2021—2020



## INTERESTED IN LEARNING MORE?

For up-to-date information such as Press Releases and Featured Fugitives from the Montgomery County Sheriff's Office and other law enforcement agencies that serve The Woodlands, please visit [www.thewoodlandstownship-tx.gov](http://www.thewoodlandstownship-tx.gov).

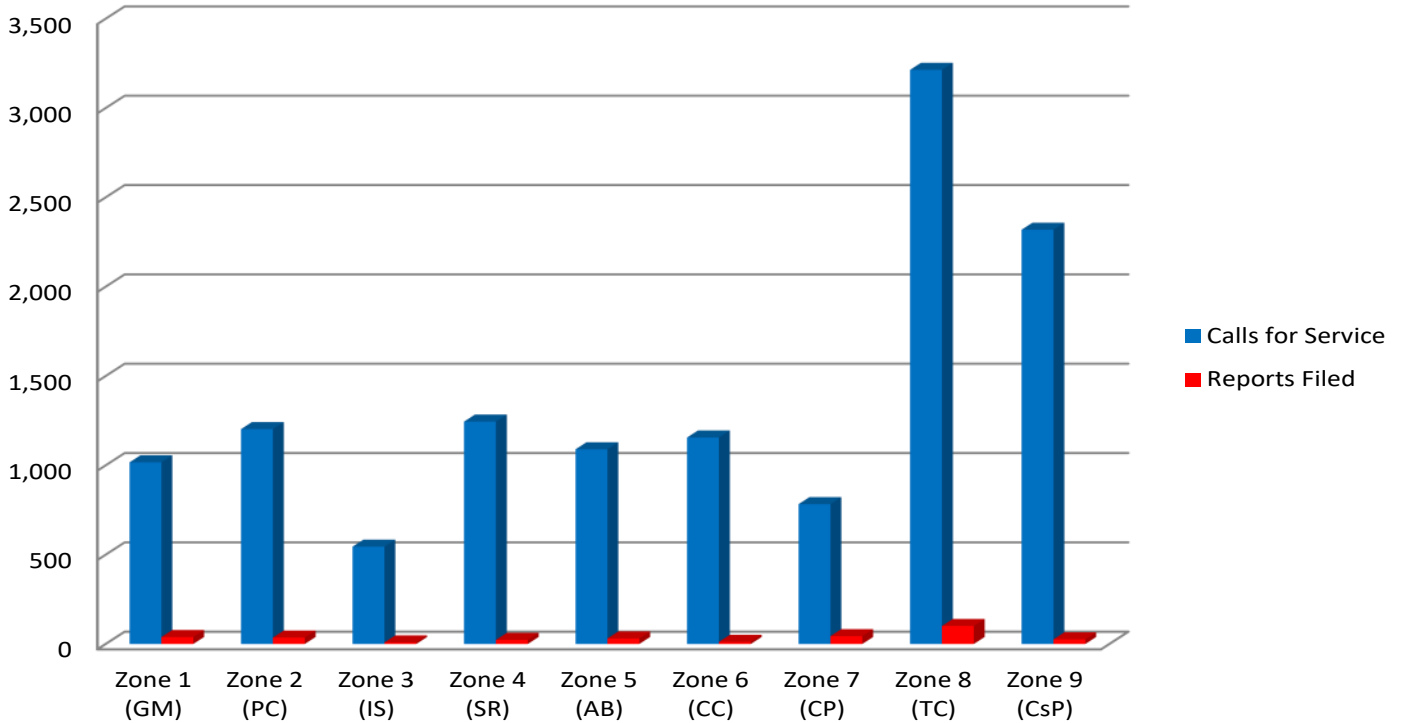
You can locate recent public safety media/Press Releases on the *Resident Page*, choose “*Law Enforcement Services*” at the bottom go to “*Law Enforcement Advisories*”.

You can also sign up for The Woodlands Township Neighborhood Watch, choose “*Neighborhood Watch*” at [www.thewoodlandstownship-tx.gov/neighborhoodwatch](http://www.thewoodlandstownship-tx.gov/neighborhoodwatch).

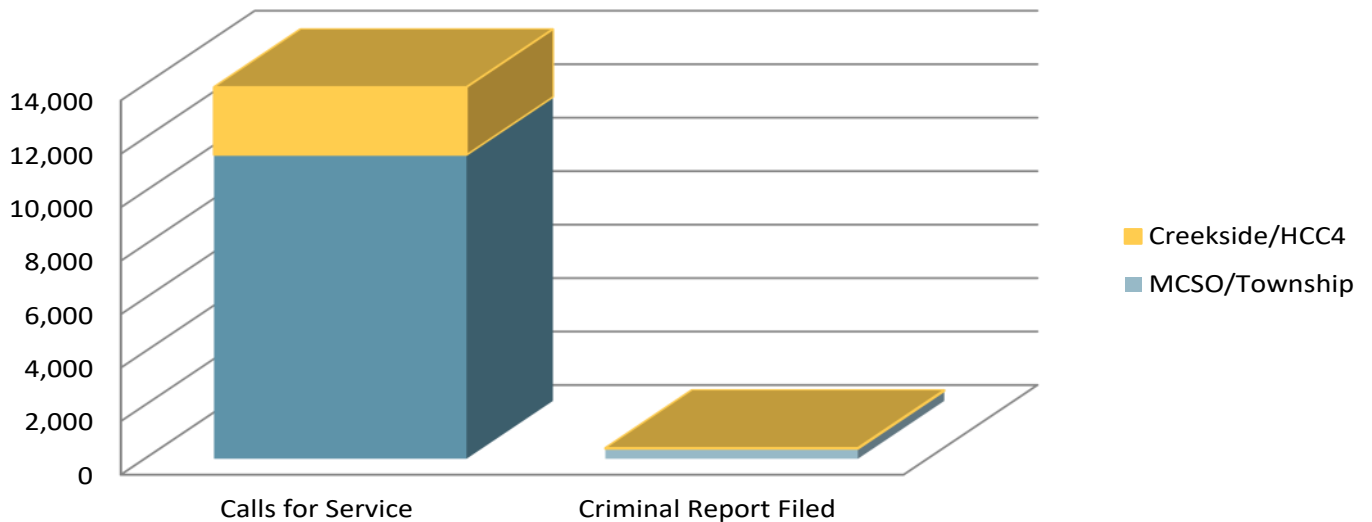
# SUMMARY OF OCTOBER ACTIVITY

November 2021 - Summary	MCSO/Township	Creekside/HCC4	Total
Calls for Service	10,253	2,319	<b>12,572</b>
Criminal Report Filed	295	26	<b>321</b>

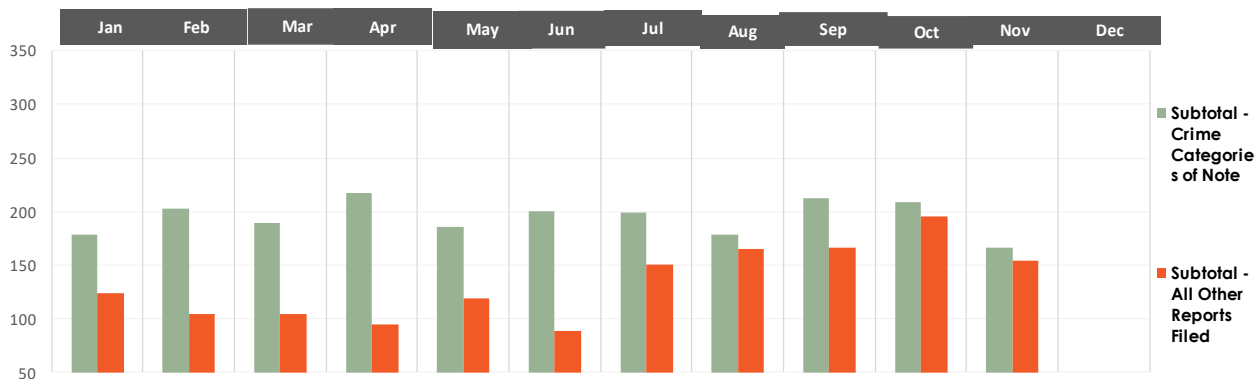
### November Activity by Zone



### Summary of November Activity

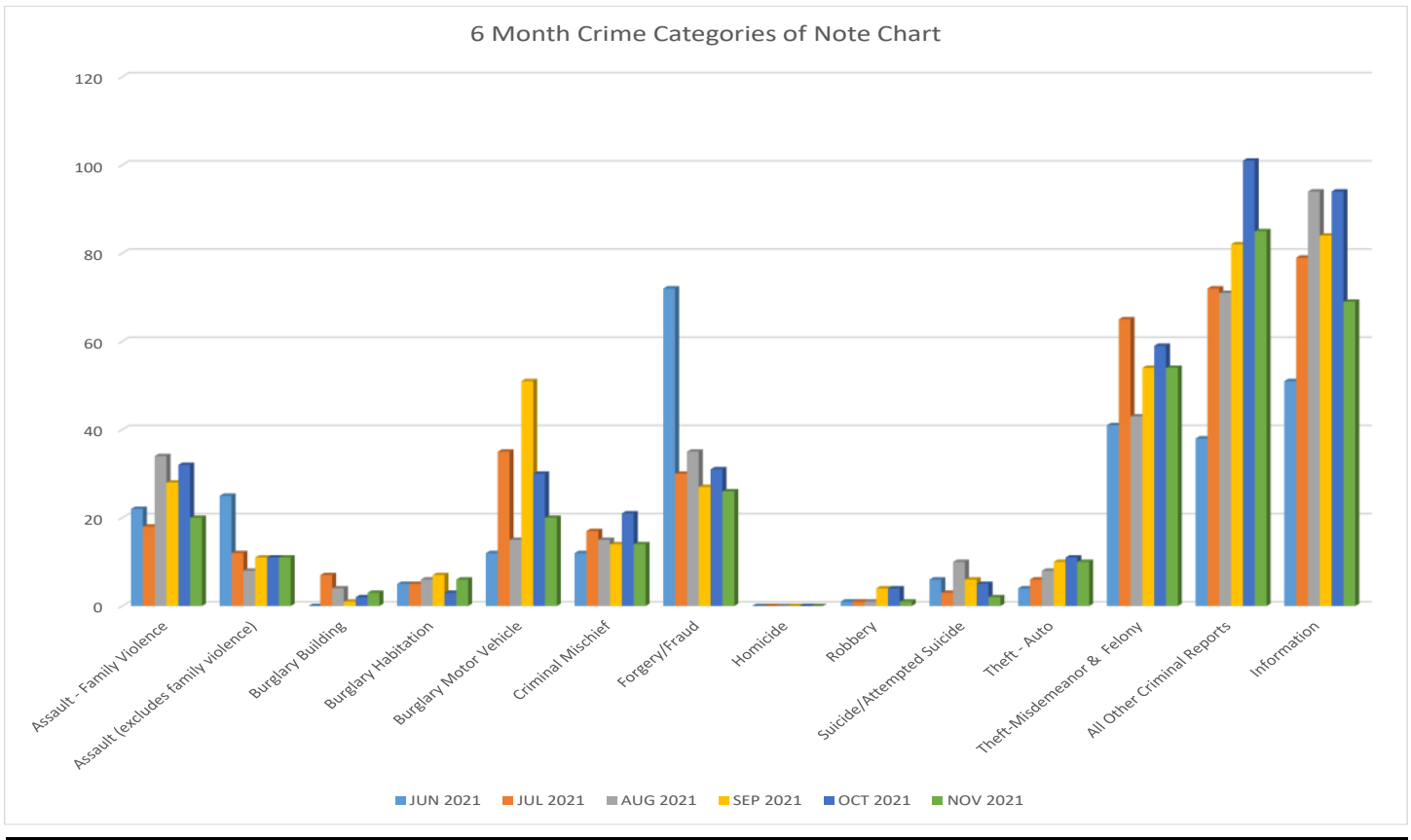


# CRIME TRENDS



CRIME CATEGORY	Jan	Feb	Mar	Apr	May	Jun	Jul	Aug	Sep	Oct	Nov	Dec	YTD
Assault - Family Violence	17	29	24	23	34	22	18	34	28	32	20		281
Assault (excludes family violence)	9	25	23	24	12	25	12	8	11	11	11		171
Burglary Building	6	5	2	2	2	0	7	4	1	2	3		34
Burglary Habitation	2	6	4	6	2	5	5	6	7	3	6		52
Burglary Motor Vehicle	17	30	9	12	30	12	35	15	51	30	20		261
Criminal Mischief	16	13	9	12	13	12	17	15	14	21	14		156
Forgery/Fraud	39	40	64	86	25	72	30	35	27	31	26		475
Homicide	0	0	1	0	0	0	0	0	0	0	0		1
Robbery	1	1	1	1	2	1	1	1	4	4	1		18
Suicide/Attempted Suicide	6	3	4	7	6	6	3	10	6	5	2		58
Theft—Auto	3	3	5	4	6	4	6	8	10	11	10		70
Theft—Misdemeanor & Felony	62	48	44	40	54	41	65	43	54	59	54		564
<b>Subtotal - Crime Categories of Note</b>	<b>178</b>	<b>203</b>	<b>190</b>	<b>217</b>	<b>186</b>	<b>200</b>	<b>199</b>	<b>179</b>	<b>213</b>	<b>209</b>	<b>167</b>		<b>2,141</b>
<b>All Other Criminal Reports</b>	<b>58</b>	<b>32</b>	<b>52</b>	<b>40</b>	<b>64</b>	<b>38</b>	<b>72</b>	<b>71</b>	<b>82</b>	<b>101</b>	<b>85</b>		<b>695</b>
<b>Information</b>	<b>66</b>	<b>72</b>	<b>53</b>	<b>55</b>	<b>55</b>	<b>51</b>	<b>79</b>	<b>94</b>	<b>84</b>	<b>94</b>	<b>69</b>		<b>772</b>
<b>Subtotal - All Other Reports Filed</b>	<b>124</b>	<b>104</b>	<b>105</b>	<b>95</b>	<b>119</b>	<b>89</b>	<b>151</b>	<b>165</b>	<b>166</b>	<b>195</b>	<b>154</b>		<b>1,467</b>
<b>Total</b>	<b>302</b>	<b>307</b>	<b>295</b>	<b>312</b>	<b>305</b>	<b>289</b>	<b>350</b>	<b>344</b>	<b>379</b>	<b>404</b>	<b>321</b>		<b>3,608</b>

# SIX MONTH CRIME TREND



## QUICK REFERENCE GUIDE FOR USING THIS REPORT

This report represent an executive summary of activity in The Woodlands. The full report with appendix provides more detailed data on which the executive summary is based.

Please keep in mind that this report offers a snapshot in time for each of the months included based on the timing of when the data was provided by law enforcement. Due to the fluid nature of criminal investigation, some of the data may have developed further after the report data was released.

**MCSO:** Montgomery County Sheriff’s Office. Unless otherwise noted, this refers to MCSO Patrol The Woodlands Township Division .

**Zones:** The Woodlands Township contracts with the Montgomery County Sheriff’s Office for policing in

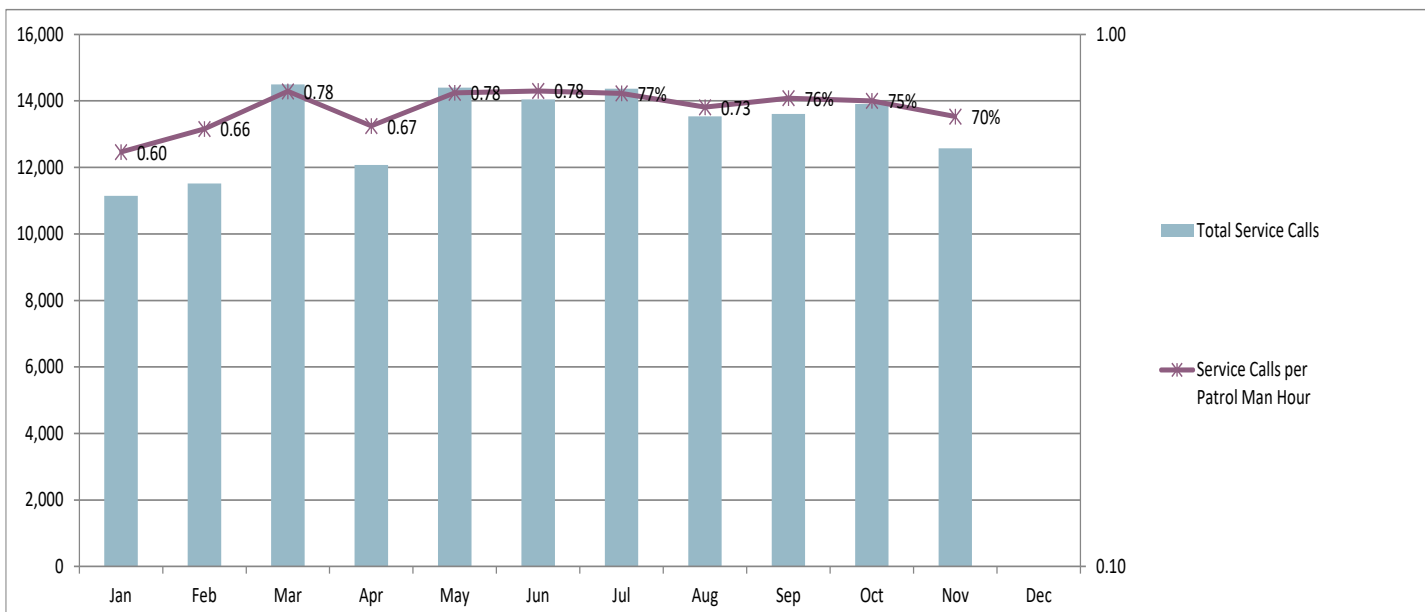
eight policing “zones”, comprising seven residential villages and one commercial district. Together, these zones make up MCSO Patrol The Woodlands Township Division. There is also a “zone” for the Village of Creekside Park, which is policed by the Harris County Constable’s Office—Precinct 4.

- Zone 1—Grogan’s Mill
- Zone 2—Panther Creek
- Zone 3—Indian Springs
- Zone 4—Sterling Ridge
- Zone 5—Alden Bridge
- Zone 6—Cochran’s Crossing
- Zone 7—College Park
- Zone 8—Town Center (commercial)
- Zone 9—Creekside Park

# ADDITIONAL NOTES 2021

November 2021—No additional notes

## CALLS FOR SERVICE TRENDS



	Jan	Feb	Mar	Apr	May	Jun	Jul	Aug	Sep	Oct	Nov	Dec	Total
<b>Total Service Calls</b>	11,142	11,520	14,492	12,070	14,396	14,047	14,363	13,533	13,610	13,906	12,572		145,651
<b>Percent of Calls Resulting In Crime Reports</b>	3%	3%	2%	3%	2%	2%	2%	3%	3%	3%	3%		2%
<b>Service Calls per Patrol Man Hour</b>	0.60	0.66	0.78	0.67	0.78	0.78	77%	0.73	76%	75%	70%		0.73
<b>Patrol Man Hours</b>	18,538	17,342	18,538	17,940	18,538	17,940	18,538	18,538	17,940	18,538	17,940		200,330

## Frequently Asked Questions

- *Do call titles equal crimes committed?* No. Call Titles speak to the types of calls that are received, but an officer may make an alternate or additional finding upon review/investigation.
- *Do Criminal Statute Reports equal arrests?* No. Criminal Statute Reports indicate that an officer believes criminal activity has occurred. Depending on the situation, additional investigation may add to or negate criminal charges.
- *What is the role of the community in “Community Policing?”* To answer that question you must have knowledge of the most basic Crime Prevention teachings and the “Crime Triangle.” The Crime Triangle identifies three elements that must be present in order for crime to be committed.
  - *Desire* of a criminal to commit a crime;
  - *Ability* to commit the crime; and the
  - *Opportunity* for the crime to be committed



Fortunately, you (residents - businesses) have control over one of the elements of the Crime Triangle - *Opportunity*. By removing the opportunity for crime to occur you can break the Crime Triangle and contribute to the Community Policing effort here in The Woodlands.

- *Where can I find the full report?* This executive summary accompanied by a full appendix of reports of the Township’s contracted law enforcement services can be found on the Township website at [www.thewoodlandstownship-tx.gov](http://www.thewoodlandstownship-tx.gov), go to “Law Enforcement Services” at the bottom go to “Community Policing Reports”.

## Investigation of Crimes Against Children:

The Township contracts with MCSO and Montgomery County Constable’s Office - Precinct 3 for services specific to investigations of crimes against children. Both agencies receive referrals from Child Protective Services (CPS) routed to Safe Harbor. In addition to the Safe Harbor program, the Township contracts with Montgomery County Constable’s Office - Precinct 3 for an Internet Crimes Investigator position. It is understood that some cases may originate or conclude outside of the Township boundaries. The “Cases Assigned—MCSO” includes data only for cases assigned within the Township boundaries, not cases that may be assigned outside of the boundaries. The numbers in this section are not cumulative, as some cases carry over from month to month.





# **APPENDIX DETAILED REPORTS**

# MONTHLY ACTIVITY REPORT—CALLS FOR SERVICE NOVEMBER 2021 — ALL ZONES



## COMBINED LAW ENFORCEMENT CALLS FOR SERVICE BY VILLAGE



CALL TYPE	Grogan's Mill	Panther Creek	Indian Springs	Sterling Ridge	Alden Bridge	Cochran's Crossing	College Park	Town Center	Creekside Park	TOTAL
911 CALLS	4	3	1	3	3	2	8	23	2	49
ALARMS	41	31	26	41	39	34	21	66	22	321
ANIMAL CALL	3	1	0	0	0	0	2	0	2	8
ASSAULT	2	0	0	0	0	0	0	5	0	7
ASSAULT (AGGRAVATED)	0	0	0	0	0	0	0	0	0	0
ASSAULT (FAMILY VIOLENCE)	4	1	0	3	3	4	2	2	1	20
ASSAULT (SEXUAL)	0	0	0	0	0	0	5	0	0	5
ASSIST CALLS	14	10	6	8	17	1	19	24	0	99
BURGLARY	4	2	0	2	0	0	0	1	0	9
BURGLARY (MOTOR VEHICLE)	6	1	0	0	4	0	4	5	0	20
CRIMINAL MISCHIEF	2	1	1	2	2	0	1	4	1	14
CRIMINAL TRESPASS	0	4	0	1	1	0	4	2	0	12
DIRECTED PATROL	354	403	189	601	463	429	299	1,072	897	4,707
DISTURBANCE	43	31	8	16	21	13	27	31	27	217
DOA (JP CALLS)	1	4	0	0	0	2	0	0	1	8
FACILITY CHECK	16	38	6	12	9	2	17	55	590	745
FORGERY / FRAUD	3	2	2	3	4	1	3	4	5	27
HARASSMENT	3	1	0	2	1	0	1	1	1	10
HOMICIDE	0	0	0	0	0	0	0	0	0	0
KIDNAPPING	0	0	0	0	0	0	0	0	0	0
MISSING PERSON (ADULT)	0	0	0	0	0	0	0	0	1	1
MISSING PERSON (JUVENILE)	0	0	0	1	2	0	2	1	2	8
NARCOTICS	0	4	0	2	0	0	1	5	1	13
PROWLER	0	0	0	0	0	0	0	0	0	0
PUBLIC INTOXICATION	2	0	0	1	0	0	1	11	0	15
PUBLIC SERVICE (INFO/CIVIL)	90	70	25	52	53	39	40	175	133	677
ROBBERY	0	0	0	0	0	0	1	0	0	1
SHOPLIFTING	0	0	0	3	0	0	11	13	0	27
SUICIDE (ATTEMPTED)	0	0	0	0	3	0	0	0	0	3
SUSPICIOUS PERSON	21	14	21	17	11	11	13	31	7	146
SUSPICIOUS VEHICLE	15	5	5	8	17	12	9	19	7	97
THEFT	6	6	0	1	1	2	9	26	5	56
TRAFFIC (D.U.I.D. & D.W.I.)	2	2	2	0	4	0	0	4	1	15
TRAFFIC ACCIDENT (MAJOR)	3	2	3	1	1	1	1	6	4	22
TRAFFIC ACCIDENT (MINOR)	12	9	18	14	13	8	30	55	6	165
TRAFFIC ENFORCEMENT	168	318	97	234	227	229	81	428	103	1,885
TRAFFIC HAZARD	8	9	11	7	10	10	2	24	8	89
VACATION WATCH	80	135	54	126	77	163	15	10	250	910
VEHICLE THEFT	1	0	0	0	2	0	2	5	1	11
WELFARE CHECK	51	46	12	27	35	17	53	83	12	336
ALL OTHER CALLS	58	50	58	57	67	176	99	1,023	229	1,817
<b>TOTAL INCIDENTS</b>	<b>1,017</b>	<b>1,203</b>	<b>545</b>	<b>1,245</b>	<b>1,090</b>	<b>1,156</b>	<b>783</b>	<b>3,214</b>	<b>2,319</b>	<b>12,572</b>
ARREST (MISDEMEANOR)	17	10	4	8	4	5	31	65	0	144
ARREST (FELONY)	0	2	1	2	0	1	14	24	0	44

# MONTHLY ACTIVITY REPORT—CALLS FOR SERVICE NOVEMBER 2020—ALL ZONES



## COMBINED LAW ENFORCEMENT CALLS FOR SERVICE BY VILLAGE



CALL TYPE	Grogan's Mill	Panther Creek	Indian Springs	Sterling Ridge	Alden Bridge	Cochran's Crossing	College Park	Town Center	Creekside Park	Total
911 CALLS	3	7	3	3	3	5	8	24	1	57
ALARMS	31	22	12	40	25	25	26	91	24	296
ANIMAL CALL	5	1	0	0	2	0	2	1	4	15
ASSAULT	1	1	0	2	0	0	0	5	0	9
ASSAULT (AGGRAVATED)	2	1	0	0	0	0	0	0	0	3
ASSAULT (FAMILY VIOLENCE)	6	3	1	3	4	2	2	1	0	22
ASSAULT (SEXUAL)	0	0	0	1	0	1	1	2	1	6
ASSIST CALLS	9	15	3	6	6	10	4	22	0	75
BURGLARY	3	1	0	3	1	0	1	5	0	14
BURGLARY (MOTOR VEHICLE)	5	1	1	0	1	1	2	5	4	20
CRIMINAL MISCHIEF	2	4	2	1	1	0	1	5	1	17
CRIMINAL TRESPASS	1	0	1	3	2	1	4	4	0	16
DIRECTED PATROL	373	470	404	480	352	284	291	1,135	541	4,330
DISTURBANCE	40	19	9	26	27	7	12	35	20	195
DOA (JP CALLS)	2	8	0	2	4	1	0	1	0	18
FACILITY CHECK	23	12	8	5	14	5	7	64	499	637
FORGERY / FRAUD	5	4	3	5	13	9	3	13	5	60
HARASSMENT	4	5	0	0	1	1	2	7	1	21
HOMICIDE	1	0	0	0	0	0	0	0	0	1
KIDNAPPING	0	0	0	0	0	0	0	0	0	0
MISSING PERSON (ADULT)	0	0	0	0	0	0	0	1	0	1
MISSING PERSON (JUVENILE)	0	0	0	0	1	0	1	1	0	3
NARCOTICS	1	3	1	1	0	1	1	6	0	14
PROWLER	0	0	0	0	0	0	0	0	0	0
PUBLIC INTOXICATION	2	0	0	1	0	0	2	2	0	7
PUBLIC SERVICE (INFO/CIVIL)	77	41	16	45	47	29	27	126	107	515
ROBBERY	0	0	0	2	0	0	1	0	0	3
SHOPLIFTING	0	0	0	6	0	0	2	9	0	17
SUICIDE (ATTEMPTED)	2	0	0	0	3	0	0	0	0	5
SUSPICIOUS PERSON	16	16	3	12	18	6	12	32	8	123
SUSPICIOUS VEHICLE	7	12	4	13	8	3	6	19	17	89
THEFT	6	12	2	5	3	0	8	16	5	57
TRAFFIC (D.U.I.D. & D.W.I.)	3	6	7	1	2	2	0	5	1	27
TRAFFIC ACCIDENT (MAJOR)	5	1	0	0	1	3	1	1	0	12
TRAFFIC ACCIDENT (MINOR)	10	10	8	16	16	10	15	55	6	146
TRAFFIC ENFORCEMENT	91	268	169	231	241	151	97	276	116	1,640
TRAFFIC HAZARD	14	6	2	5	20	7	3	27	6	90
VACATION WATCH	22	101	28	121	69	58	7	2	114	522
VEHICLE THEFT	0	0	0	0	1	0	1	5	1	8
WELFARE CHECK	55	50	21	18	35	11	34	61	6	291
ALL OTHER CALLS	61	65	59	70	41	197	84	850	248	1,675
<b>TOTAL INCIDENTS</b>	<b>888</b>	<b>1,165</b>	<b>767</b>	<b>1,127</b>	<b>962</b>	<b>830</b>	<b>668</b>	<b>2,914</b>	<b>1,736</b>	<b>11,057</b>
ARREST (MISDEMEANOR)	9	6	2	5	2	1	7	23	0	55
ARREST (FELONY)	2	4	1	4	0	1	0	5	0	17

## ALPHA & OMEGA MOUNTED PATROL



- In November 2021 Mounted Patrol provided customer service and assisted security and law enforcement when appropriate.
  - **International Visitors:** Africa, Belgium, Canada, Cuba, England, France, Germany, Italy, Japan, Mexico and Russia
  - **Out-of-State Visitors:** Alaska, Arizona, Arkansas, California, Colorado, Florida, Georgia, Idaho, Illinois, Iowa, Kansas, Kentucky, Louisiana, Maryland, Massachusetts, Michigan, Mississippi, Missouri, Montana, Nebraska, Nevada, New Jersey, New Mexico, New York, North Carolina, North Dakota, Ohio, Oklahoma, Oregon, Pennsylvania, South Carolina, Tennessee, Utah, Virginia, Washington, Wisconsin, and Wyoming

Alpha & Omega Mounted	NOV 2021	NOV 2020		YTD 2021	YTD 2020
Car Alarm Checks	60	204		1,341	1,950
Lost Vehicles	18	37		293	447
Lockouts	2	4		31	62
Unsecured Vehicles	26	18		354	574
Directions	970	746		9,207	10,102
Handicap Parking	90	100		1,614	2,258
Customer Assists	33	111		1,913	3,084
Law Enforcement Assists	24	12		223	242
Security Assists	31	25		792	793

## MONTGOMERY COUNTY JUSTICE COURT—PRECINCT 3



Justice of the Peace Court - 3	OCT 2021	NOV 2021	YTD 2021
New Class "C" Misdemeanor Charges Filed	1,437	1,795	17,290
Cases Set on Criminal Docket	871	1,045	8,917
Criminal Cases Pending	4,015	4,016	45,561
Civil Cases on Docket	1,114	1,045	12,582
Arrest Warrants Issued	36	0	36
Total Revenues Collected for Month	\$241,480.00	\$218,812.00	\$2,938,113.00

Please note: Monthly statistics for this agency typically run one month behind.

## MONTGOMERY COUNTY CONSTABLE'S OFFICE—PRECINCT 3—ICI

THE WOODLANDS TOWNSHIP	NOV 2021	NOV 2020		YTD 2021	YTD 2020
<b>Internet Crimes Investigator</b>					
Search Warrants	2	1		17	14
New Cases Assigned	3	1		19	18
Felony Charge(s) Filed	4	1		21	15
Misdemeanor Charge(s) Filed	0	0		1	1
<b>Total Charges</b>	<b>4</b>	<b>1</b>		<b>22</b>	<b>16</b>



## MONTGOMERY COUNTY SHERIFF'S OFFICE AND MONTGOMERY COUNTY CONSTABLE'S OFFICE—PRECINCT 3— CHILDREN'S SAFE HARBOR THROUGH THE WOODLANDS TOWNSHIP

Children's Safe Harbor	NOV 2021	NOV 2020		YTD 2021	YTD 2020
Cases Assigned - MCSO (Woodlands only)	2	4		50	44
Cases Assigned - MCCO-P3	12	4		145	65
<b>Total Safe Harbor - Township Assigned</b>	<b>14</b>	<b>8</b>		<b>195</b>	<b>114</b>
Total (All) Safe Harbor Cases - Assigned	14	18		n/a	267
<b>Total Charges Filed (Township)</b>	<b>1</b>	<b>3</b>		<b>29</b>	<b>21</b>



### CHARGES FILED—ICI & SAFE HARBOR

Crimes Against Children	AUG	SEP	OCT	NOV	YTD 2021
Charges Filed - Internet Crimes	4	1	2	4	13
Charges Filed - Safe Harbor	0	1	2	1	29
<b>TOTAL CHARGES FILED</b>	<b>4</b>	<b>2</b>	<b>4</b>	<b>5</b>	<b>42</b>



## ABOUT THE TOWNSHIP'S LAW ENFORCEMENT SERVICES

*The Woodlands Township is a special purpose district providing municipal types of services to The Woodlands community. By law, The Woodlands Township cannot directly employ law enforcement officers; however, the Township contracts for supplemental law enforcement services in Montgomery County through a contract with the Montgomery County Sheriff's Office and in Harris County through a contract with Harris County Constable's Office, Precinct 4. The counties provide community policing services in eight residential zones and the tourism-oriented zone located in Town Center. All zones have full-time deputies providing 24/7 coverage. The Township also contracts with the Montgomery County Constable's Office, Precinct 3 for investigators specifically assigned to investigate crimes against children.*

*In addition to the Township's county contracted community-policing deputies, the counties also provide services as needed in the detective operation, administrative support, special services, SWAT team, training, recruitment, traffic control, identification – crime lab, communications, sex offender division, fleet operations, jail division, auto theft and other areas through the county tax levy.*

---

## INTERESTED IN LEARNING MORE?

For up-to-date information such as Press Releases and Featured Fugitives from the Montgomery County Sheriff's Office and other law enforcement agencies that serve The Woodlands, please visit [www.thewoodlandstownship-tx.gov](http://www.thewoodlandstownship-tx.gov).

You can locate recent public safety media/Press Releases on the *Resident Page*, choose "Law Enforcement Services" at the bottom go to "Law Enforcement Advisories".

You can also sign up for The Woodlands Township Neighborhood Watch under "Neighborhood Watch" at [www.thewoodlandstownship-tx.gov/neighborhoodwatch](http://www.thewoodlandstownship-tx.gov/neighborhoodwatch).