

Harper's Landing Pathway Connector

Parks and Recreation



May 19, 2022

Harper's Landing Connector

- Lacks connection to pathway system
- Need identified in the Bike/Pedestrian Master Plan
- TxDOT, Railroad, County obtaining easements



SH 242 Corridor

- Side Path to be included (FM1488 – I-45)
- Expected completion date – 2025
- TxDOT aware of project/review impact of future flyover

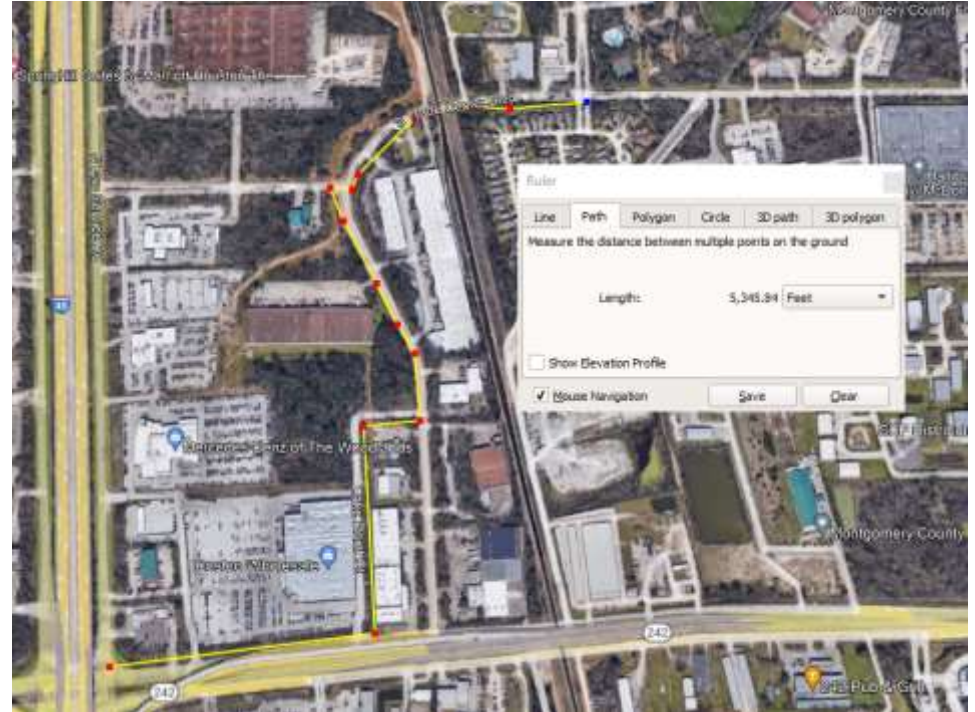
I-45 from Shenandoah Dr to SH 242 (0110-04-202 & 0110-04-205)



- Anticipated Let Date: Late 2023
- Project Description: Construct new NB - EB direct connector, construct operational improvements, and construct drainage improvements
- Length: 1.5 miles

Harper's Landing Connector

- 5,345 +/- linear feet
- Initial estimated cost – \$377,375
- Project completion date – 2025
- Cost of acquisition of easements (unknown)



Harper's Landing Connector – Jones and Carter

Bike/Ped Master Plan Task Order

- Phase 1 – Initial utility coordination, property research, preliminary design – \$60,000
- Phase 2 – Coordination with Montgomery County, TxDOT, Railroad; final schematic package, environmental analysis – \$36,750
- Phase 3 – Easement acquisition, Construction drawings, bid management, construction administration – TBD



Recommendation

“Amend the Professional Services Agreement with Jones and Carter (C-2015-5380A7) and issue a related Task Order for Phase 2 - Harper's Landing Side Path with funding from the Transportation Reserve.”