

# TEXAS TRAFFIC LAWS

TROOPER ERIK A. BURSE  
TEXAS DEPARTMENT OF PUBLIC SAFETY  
SAFETY EDUCATION SERVICE  
CONROE, TX  
936-442-2800



DPSnet

*Courtesy - Service - Protection*

# TEXAS TRAFFIC LAWS

## ■ Agenda

- Traffic Crashes
- Safety Belt
- Driving While Intoxicated
- Road Rage
- Cell Phone
- Move Over Law



DPS<sub>net</sub>

*Courtesy - Service - Protection*



# CRASH



DPS<sub>net</sub>

*Courtesy - Service - Protection*

# TOP FIVE

- Speed
- Unsafe Speed
- Following Too Closely
- Fail To Yield Right of Way
- Intoxication

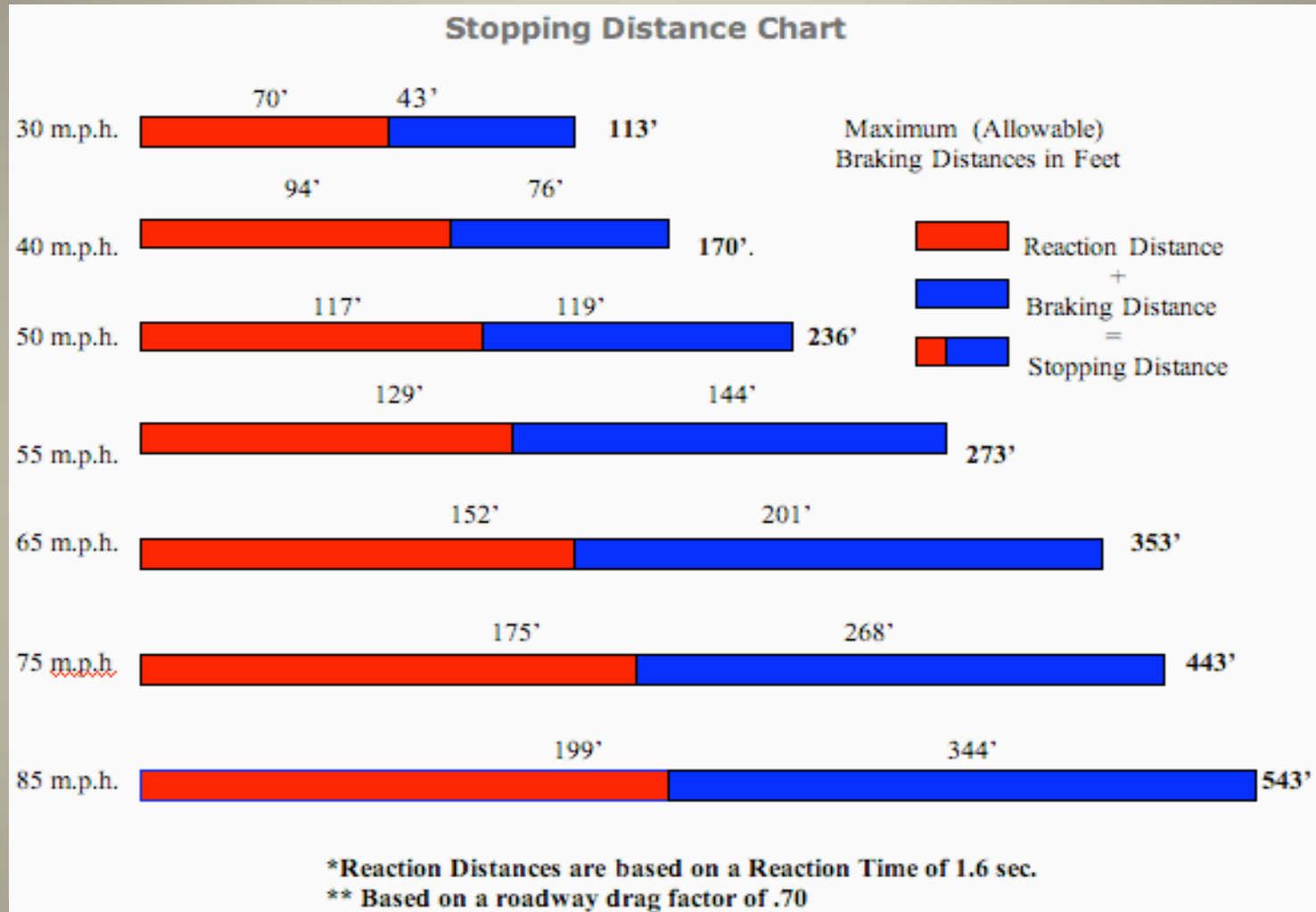


DPS<sub>net</sub>

*Courtesy - Service - Protection*



# WHEN TO STOP



DPSnet

Courtesy - Service - Protection

# CRASHES CAN WRECK YOUR BUSINESS

- Motor vehicle crashes are the number one cause of on-and off-the-job accidental deaths in the United States.
- This year, more than 3,500 people will be killed and 350,000 will be injured on Texas streets and Highways. One of your employees or someone in their family could be one of them. Not only do traffic crashes take an emotional toll on their victims, they also affect Texas employers.



DPS<sub>net</sub>

*Courtesy - Service - Protection*

## HIGH IMPACT OF CRASHES

An on-the-job traffic crash cost an employer more than \$24,000. If the employee is injured, the cost increases to well over \$125,000



## Crashes Hit Bottom Line

- Texas alone spends \$4.3 billion every year as a result of on-the-job and off-the-job traffic injuries. Where does the money go?
- \$1.7 billion to health, life, and disability insurance premiums, sick leave and contributions to Workers' Compensation medical and disability insurance.
- \$2.6 billion to Vehicle property damage, liability insurance, crash related expenses, lost productivity, recruiting and training workers to replace employees who are killed or permanently disable.



DPSnet

*Courtesy - Service - Protection*

# TEXAS TRAFFIC LAWS



DPS<sub>net</sub>

*Courtesy - Service - Protection*





FG +0.0

SG +0.0

Time -10.00

Rear View

# TEXAS TRAFFIC LAWS

## Safety Belt (Effective 09-01-2009)

- Applicable to all passenger vehicles: passenger car, light truck, sport utility vehicle, truck, or truck tractor truck: 15-passenger vans are NOW considered passenger vehicles under law.
- Child passengers who are younger than 8 years of age, unless taller than 4 feet and 9 inches are required to be secured in a child passenger safety seat system according to the instructions of the manufacturer.
- All occupants must be restrained in a safety belt regardless of position in the vehicle, if the position is equipped with a safety belt.



DPS<sub>net</sub>

*Courtesy - Service - Protection*

# FACT

Since the annual initiative “Click It or Ticket” began in Texas in 2002 to encourage drivers and passengers to buckle up or get an expensive citation, Texas has saved more than \$6.6 billion in insurance premiums, medical care, property damage, lost productivity and travel delays.



DPS<sub>net</sub>

*Courtesy - Service - Protection*

# WHO'S NOT BUCKLING UP?

One of every 10 motorists in Texas has yet to get into the habit of using a safety belt. Odds are, some of your employees or their relatives are among them. Among the worst offenders when it comes to failure to buckle up are teens and pickup truck drivers.

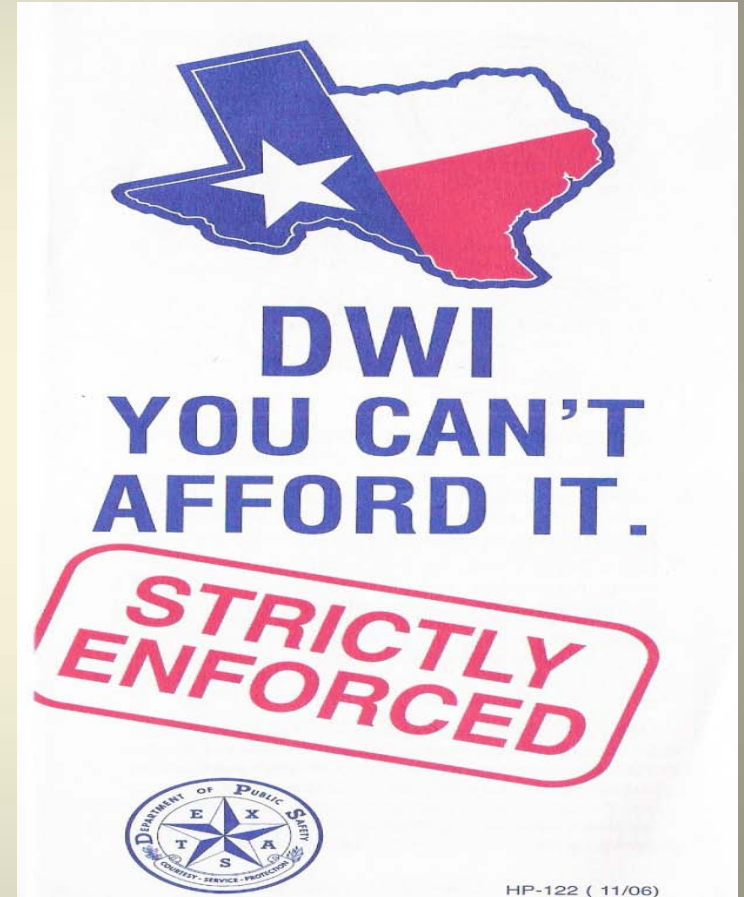


DPS<sub>net</sub>

*Courtesy - Service - Protection*



# DRIVING WHILE INTOXICATED



DPSnet

Courtesy - Service - Protection

# DRIVING WHILE INTOXICATED

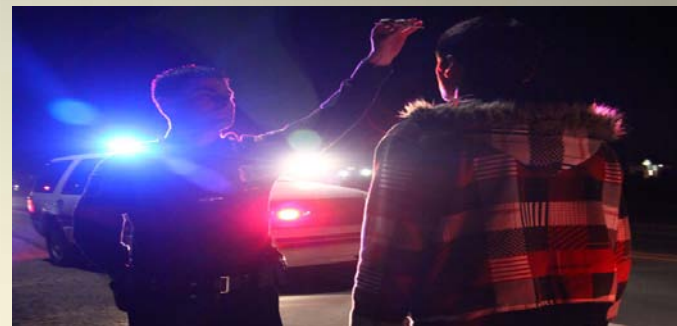
- About every 20 minutes, someone is killed or hurt in Texas in a crash involving alcohol.
- Alcohol is a factor in almost four of every ten work-related traffic crashes.



DPSnet

*Courtesy - Service - Protection*

# DRIVING WHILE INTOXICATED



- “INTOXICATED” means
  - A. Not having the NORMAL use of MENTAL or PHYSICAL faculties by reason of the introduction of alcohol, a controlled substance, a drug, a dangerous drug, a combination of two or more of those substances, or any other substance into the body; or
  - B. Having an alcohol concentration of **0.08** or more.  
Note: **0.04** for Commercial Motor Vehicle Driver.



DPS<sub>net</sub>

*Courtesy - Service - Protection*



11:58 AM





# COST ESTIMATION 1<sup>ST</sup> OFFENSE FOR DWI

## TIME IN JAIL

- CAR TOWED \$100
- STORAGE \$75
- BOND \$1,000
- DL SUSPENSION 6 60-90 DAYS
- LAWYERS FEE

PLEA: \$3,000

TRIAL: \$3,000-15,000

- DPS ALR HEARING: \$500-\$15,000

---

**\$4,675.00**

## UPON CONVICTION

- DWI ED. PROGRAM \$150
- FINE \$1,500
- ADDTL. DL SUSP. 60-90 DAYS
- SR-22 INS./YEAR \$2,000
- LAWYERS FEE

OCCUPATIONAL DL: \$1,000

ADMIN. FEE (BEGAN 09-01-03) **\$3,000**

- ALR REINSTATEMENT FEE \$125

TOTAL COST (NO CRASH)= **\$12,450.00**

\*\*\*LIFE TIME CRIMINAL HISTORY\*\*\*



DPSnet

*Courtesy - Service - Protection*

# FACT

Eliminating on-and off-the-job alcohol related crashes could save Texas employers more than \$830 million a year.



DPS<sub>net</sub>

*Courtesy - Service - Protection*

Beware of  
Aggressive  
Drivers

[www.bigstock.com](http://www.bigstock.com) · 569862



DPS<sub>net</sub>

*Courtesy - Service - Protection*



DPS<sub>net</sub>

*Courtesy - Service - Protection*



Rank	Top 10 US Cities for Road Rage
1	New York
2	Dallas/Fort Worth
3	Detroit
4	Atlanta
5	Minneapolis/St. Paul
6	Phoenix
7	Miami
8	Houston
9	Cincinnati
10	San Diego
MC	

*MarketingCharts.com*

*Data Source: AutoVantage 2009 Road Rage Survey*



**DPS***net*

*Courtesy - Service - Protection*



DPS<sub>net</sub>

*Courtesy - Service - Protection*



# texting & Driving



DPS<sub>net</sub>

*Courtesy - Service - Protection*



DPS<sub>net</sub>

*Courtesy - Service - Protection*



DPSnet

*Courtesy - Service - Protection*



# TEXAS TRAFFIC LAWS

## CELL PHONE USE

When we use our cell phones in a school zone?



DPS<sub>net</sub>

*Courtesy - Service - Protection*



DPSnet

Courtesy - Service - Protection

# TEXAS TRAFFIC LAWS

## Move Over Law

- **Slow down** 20 miles per hour below the speed limit or
- **Vacate the lane** closest to the stopped emergency vehicle, if the road has multiple lanes traveling in the same direction.

You should only move over if you can safely do so, otherwise, slow down 20 miles per hour below the speed limit.



DPS<sub>net</sub>

*Courtesy - Service - Protection*

M 15:07:34  
05-05-00



TRPS 3232/3230



DPSnet

Courtesy - Service - Protection

02:03:03  
01-11-00



DPSnet

*Courtesy - Service - Protection*



# FACT

Roadside accidents are the number one killer for Texas State Troopers.



DPS<sub>net</sub>

*Courtesy - Service - Protection*

# REMEMBER!

- GET PLENTY OF REST
- ALLOW FOR TRAVEL TIME
- WEAR YOUR SEATBELT
- STAY ALERT



DPS<sub>net</sub>

*Courtesy - Service - Protection*

# TRAVELING IN TEXAS

- REGISTRATION CURRENT
- INSPECTION STICKER CURRENT
- TWO LICENSE PLATES
- INSURANCE CURRENT/INSIDE THE VEHICLE



DPS<sub>net</sub>

*Courtesy - Service - Protection*

# TEXAS MOTORIST ASSISTANCE PROGRAM

1 (800) 525-5555

or

\*DPS



DPS<sub>net</sub>

*Courtesy - Service - Protection*

THANKS AND HAVE A GREAT DAY



DPS<sub>net</sub>

*Courtesy - Service - Protection*