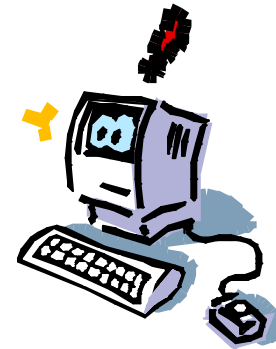
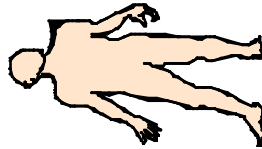


# Justice of the Peace

- Judge
- Administrative Hearing Officer
- Magistrate
- Coroner
- Administrator
- Presented by:
- Edie Connelly, Precinct Three, Justice of the Peace



# Judge



- The Justice of the Peace is the Judge of the Justice Court in the Precinct. There are five Justice Court Precincts in Montgomery County.
- The Justice must follow the Judicial Canon of Ethics.
- The Justice must comply with annual education requirements.

# Criminal Jurisdiction

- The Justice has jurisdiction over misdemeanor cases punishable by fine, or a fine and a sanction which does not consist of confinement.
- Examples are:
  - traffic offenses
  - conduct offenses
  - alcohol and tobacco offenses
  - truancy related offenses and curfew violations
  - shoplifting and theft offenses
  - county ordinance violations

# Civil Jurisdiction

- The Justice Court has jurisdiction over civil cases in which the amount in controversy is \$10,000 or less and may involve money, property or both.
- The Court has exclusive jurisdiction over eviction suits.
- The Court may issue Writs of Execution, Garnishment, Re-entry and Distress Warrants.

# New Rules for Justice Court

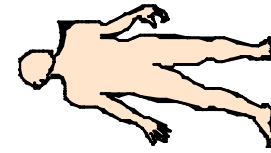
- Effective June 29, 2011, the Texas Legislature amended the Texas Government Code and abolished the Small Claims Court.
- The Texas Supreme Court promulgated new rules of civil procedure for the Justice Court.
- The new rules apply to all cases filed in the Court after May 1, 2013.

# Administrative Hearing Officer



- The Justice hears the appeals of:
- driver's license suspension and revocations for habitual violators, violations of driver's license restrictions and medical revocations;
- handgun license suspension, revocations and denials;
- dangerous dog determinations;
- and vehicle tow hearings.

# Coroner



- The Justice is on call for deaths when a doctor is not in attendance or cannot certify cause of death.
- The Justice determines cause and manner of death and if foul play was involved.
- Inquest calls are urgent and require the approval of the Justice before the body may be moved.

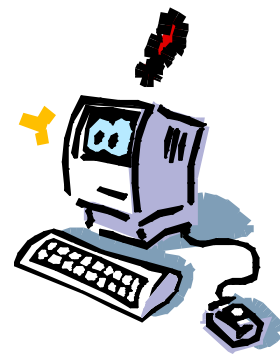
# Magistrate



- The Justice may give rights warnings to arrested persons, make determinations of appropriate bonds, determine probable cause for arrests, and, issue arrest and search warrants.
- The Justice may issue protective and peace bond orders and may issue emergency apprehension warrants.
- The Justice may decide the disposition of cruelly treated animals.
- The Justice may perform marriage ceremonies.



# Administrator



- The Justice supervises the justice court clerks.
- The Justice must safeguard public funds and insure the collection of fines and fees owed to the County.
- The Justice serves as a Notary Public.
- The Justice supervises the expenditures within the annual budget which is allocated by the Commissioners' Court.

2013

## Precinct Three Justice Court:

34,075 Civil and Criminal cases

845 cases filed against juveniles

583 Inquests

Fines and fees receipted totaled \$3,888,895.42